

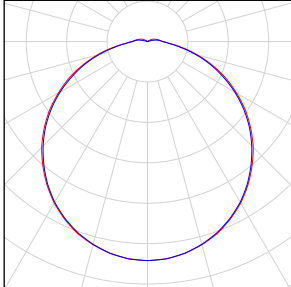
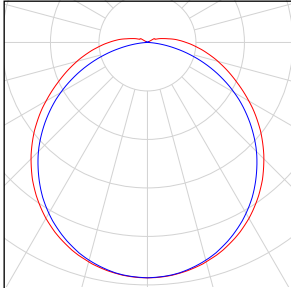
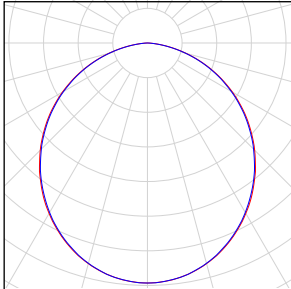
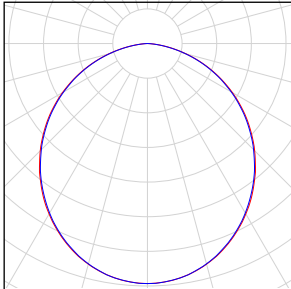
Pildas Skola, Pagarbs

Table of contents

Pildas Skola, Pagarbs

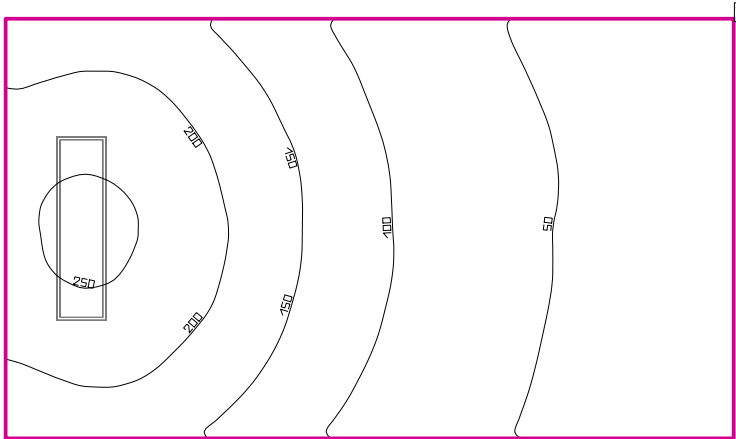
| | |
|---------------------------|----|
| Luminaire parts list..... | 3 |
| Site 1 | |
| Building 1 | |
| Storey 1 | |
| 82 | |
| Room summary..... | 4 |
| 83 | |
| Room summary..... | 5 |
| 84 | |
| Room summary..... | 6 |
| 85 | |
| Room summary..... | 7 |
| 86 | |
| Room summary..... | 8 |
| 87 | |
| Room summary..... | 9 |
| 88 | |
| Room summary..... | 10 |
| 89 | |
| Room summary..... | 11 |
| 90 | |
| Room summary..... | 12 |
| 91 | |
| Room summary..... | 13 |
| 92 | |
| Room summary..... | 14 |
| 93 | |
| Room summary..... | 15 |
| 95 | |
| Room summary..... | 16 |
| 95 | |
| Room summary..... | 17 |

Pildas Skola, Pagarbs

| Quantity | Luminaire (Luminous emittance) | | |
|----------|---|--|---|
| 5 | LUXIONA Troll - AM500LEDXXXPCI65 AMETYST 500 LED 3800LM PC E IP65 830 Luminous emittance 1 Fitting: 1xLED 3950/830 Light output ratio: 67.73% Lamp luminous flux: 3950 lm Luminaire luminous flux: 2675 lm Power: 32.0 W Luminous efficacy: 83.6 lm/W Colourimetric data 1x: CCT 3000 K, CRI 80 | See our luminaire catalog for an image of the luminaire. |  |
| 30 | LUXIONA Troll - MELEDXXXOPAL METEOR LUX LED 5200LM OPAL E 840 Luminous emittance 1 Fitting: 4xModu³ LED LINEAR 1300lm/840 Light output ratio: 77.76% Lamp luminous flux: 5568 lm Luminaire luminous flux: 4330 lm Power: 36.0 W Luminous efficacy: 120.3 lm/W Colourimetric data 4x: CCT 4000 K, CRI 80 | See our luminaire catalog for an image of the luminaire. |  |
| 2 | LUXIONA Troll - RLOOKLEDXX_XXPLXEI44 RUBIN LOOK LED 4400LM PLX E IP44 34 840 / 600X300 Luminous emittance 1 Fitting: 2xModu æ½ LED LINEAR 2200lm/840 Light output ratio: 74.52% Lamp luminous flux: 4712 lm Luminaire luminous flux: 3511 lm Power: 32.0 W Luminous efficacy: 109.7 lm/W Colourimetric data 2x: CCT 4000 K, CRI 80 | See our luminaire catalog for an image of the luminaire. |  |
| 1 | LUXIONA Troll - RLOOKLEDXX_XXPLXEI44 RUBIN LOOK LED 5200LM PLX E IP44 21 840 / 1200X300 Luminous emittance 1 Fitting: 4xModu æ½ LED LINEAR 1300lm/840 Light output ratio: 74.52% Lamp luminous flux: 5568 lm Luminaire luminous flux: 4149 lm Power: 36.0 W Luminous efficacy: 115.3 lm/W Colourimetric data 4x: CCT 4000 K, CRI 80 | See our luminaire catalog for an image of the luminaire. |  |

Total lamp luminous flux: 201782 lm, Total luminaire luminous flux: 154446 lm, Total Load: 1340.0 W, Luminous efficacy: 115.3 lm/W

82



Clearance height: 2.500 m, Reflection factors: Ceiling 70.0%, Walls 50.0%, Floor 20.0%, Maintenance factor: 0.80

Workplane

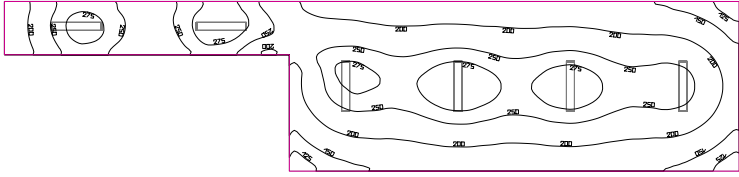
| Surface | Result | Average (Target) | Min | Max | Min/average | Min/max |
|---------------|--|------------------|------|-----|-------------|---------|
| 1 Workplane 1 | Perpendicular illuminance (adaptive) [lx] Height: 0.000 m, Wall zone: 0.000 m | 118 (≥ 500) | 27.8 | 259 | 0.24 | 0.11 |

| # | Luminaire | Φ(Luminaire) [lm] | Power [W] | Luminous efficacy [lm/W] |
|--------------------------|--|-------------------|-----------|--------------------------|
| 1 | LUXIONA Troll - RLOOKLEDXX_XXPLXEI44 RUBIN LOOK LED 5200LM PLX E IP44 21 840 / 1200X300 | 4149 | 36.0 | 115.3 |
| Total via all luminaires | | 4149 | 36.0 | 115.3 |

Lighting power density: $2.67 \text{ W/m}^2 = 2.26 \text{ W/m}^2/100 \text{ lx}$ (Floor area of room 13.50 m^2)

The energy consumption quantities refer to the lights planned for the room without taking into account light scenes and their dimming levels.
Consumption: 99 kWh/a of maximum 500 kWh/a

83



Clearance height: 2.500 m, Reflection factors: Ceiling 70.0%, Walls 50.0%, Floor 20.0%, Maintenance factor: 0.80

Workplane

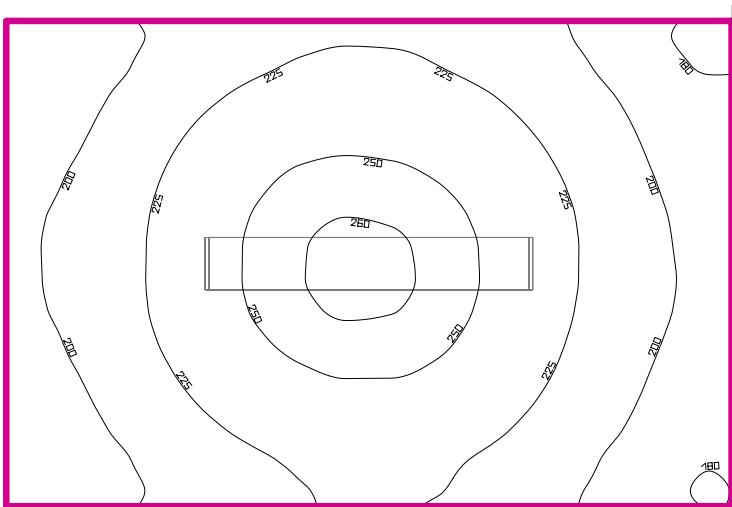
| Surface | Result | Average (Target) | Min | Max | Min/average | Min/max |
|---------------|--|------------------|-----|-----|-------------|---------|
| 1 Workplane 2 | Perpendicular illuminance (adaptive) [lx] Height: 0.000 m, Wall zone: 0.000 m | 222 (≥ 500) | 110 | 296 | 0.50 | 0.37 |

| # | Luminaire | Φ(Luminaire) [lm] | Power [W] | Luminous efficacy [lm/W] |
|--------------------------|--|-------------------|-----------|--------------------------|
| 6 | LUXIONA Troil - MELEDXXXOPAL METEOR LUX LED 5200LM OPAL E 840 | 4330 | 36.0 | 120.3 |
| Total via all luminaires | | 25980 | 216.0 | 120.3 |

Lighting power density: $3.78 \text{ W/m}^2 = 1.71 \text{ W/m}^2/100 \text{ lx}$ (Floor area of room 57.14 m^2)

The energy consumption quantities refer to the lights planned for the room without taking into account light scenes and their dimming levels.
Consumption: 590 kWh/a of maximum 2050 kWh/a

84



Clearance height: 2.500 m, Reflection factors: Ceiling 70.0%, Walls 50.0%, Floor 20.0%, Maintenance factor: 0.80

Workplane

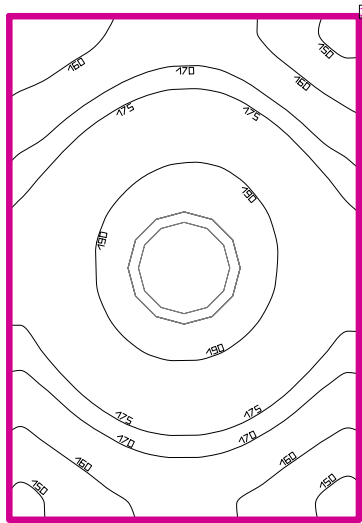
| Surface | Result | Average (Target) | Min | Max | Min/average | Min/max |
|---------------|--|------------------|-----|-----|-------------|---------|
| 1 Workplane 3 | Perpendicular illuminance (adaptive) [lx] Height: 0.000 m, Wall zone: 0.000 m | 220 (≥ 500) | 177 | 263 | 0.80 | 0.67 |

| # | Luminaire | Φ(Luminaire) [lm] | Power [W] | Luminous efficacy [lm/W] |
|--------------------------|--|-------------------|-----------|--------------------------|
| 1 | LUXIONA Troll - MELEDXXXOPAL METEOR LUX LED 5200LM OPAL E 840 | 4330 | 36.0 | 120.3 |
| Total via all luminaires | | 4330 | 36.0 | 120.3 |

Lighting power density: $6.96 \text{ W/m}^2 = 3.16 \text{ W/m}^2/100 \text{ lx}$ (Floor area of room 5.17 m^2)

The energy consumption quantities refer to the lights planned for the room without taking into account light scenes and their dimming levels.
Consumption: 99 kWh/a of maximum 200 kWh/a

85



Clearance height: 2.500 m, Reflection factors: Ceiling 70.0%, Walls 50.0%, Floor 20.0%, Maintenance factor: 0.80

Workplane

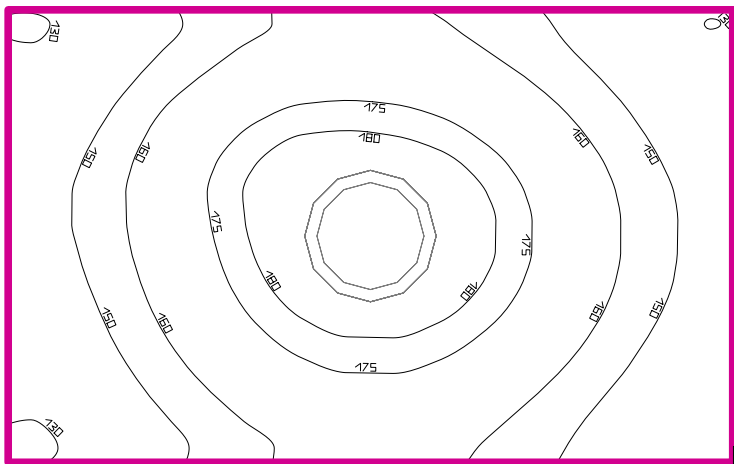
| Surface | Result | Average (Target) | Min | Max | Min/average | Min/max |
|---------------|--|------------------|-----|-----|-------------|---------|
| 1 Workplane 4 | Perpendicular illuminance (adaptive) [lx] Height: 0.000 m, Wall zone: 0.000 m | 175 (≥ 500) | 146 | 198 | 0.83 | 0.74 |

| # | Luminaire | Φ(Luminaire) [lm] | Power [W] | Luminous efficacy [lm/W] |
|--------------------------|--|-------------------|-----------|--------------------------|
| 1 | LUXIONA Troll - AM500LEDXXXPCI65 AMETYST 500 LED 3800LM PC E IP65 830 | 2675 | 32.0 | 83.6 |
| Total via all luminaires | | 2675 | 32.0 | 83.6 |

Lighting power density: 12.37 W/m² = 7.07 W/m²/100 lx (Floor area of room 2.59 m²)

The energy consumption quantities refer to the lights planned for the room without taking into account light scenes and their dimming levels.
Consumption: 88 kWh/a of maximum 100 kWh/a

86



Clearance height: 2.500 m, Reflection factors: Ceiling 70.0%, Walls 50.0%, Floor 20.0%, Maintenance factor: 0.80

Workplane

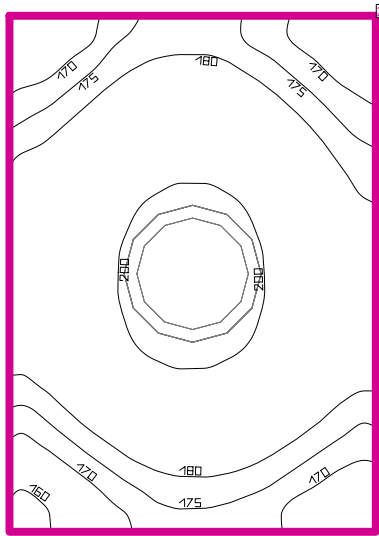
| Surface | Result | Average (Target) | Min | Max | Min/average | Min/max |
|---------------|--|------------------|-----|-----|-------------|---------|
| 1 Workplane 5 | Perpendicular illuminance (adaptive) [lx] Height: 0.000 m, Wall zone: 0.000 m | 160 (≥ 500) | 127 | 187 | 0.79 | 0.68 |

| # | Luminaire | Φ(Luminaire) [lm] | Power [W] | Luminous efficacy [lm/W] |
|--------------------------|--|-------------------|-----------|--------------------------|
| 1 | LUXIONA Troll - AM500LEDXXXPCI65 AMETYST 500 LED 3800LM PC E IP65 830 | 2675 | 32.0 | 83.6 |
| Total via all luminaires | | 2675 | 32.0 | 83.6 |

Lighting power density: $9.12 \text{ W/m}^2 = 5.69 \text{ W/m}^2/100 \text{ lx}$ (Floor area of room 3.51 m^2)

The energy consumption quantities refer to the lights planned for the room without taking into account light scenes and their dimming levels.
Consumption: 88 kWh/a of maximum 150 kWh/a

87



Clearance height: 2.500 m, Reflection factors: Ceiling 70.0%, Walls 50.0%, Floor 20.0%, Maintenance factor: 0.80

Workplane

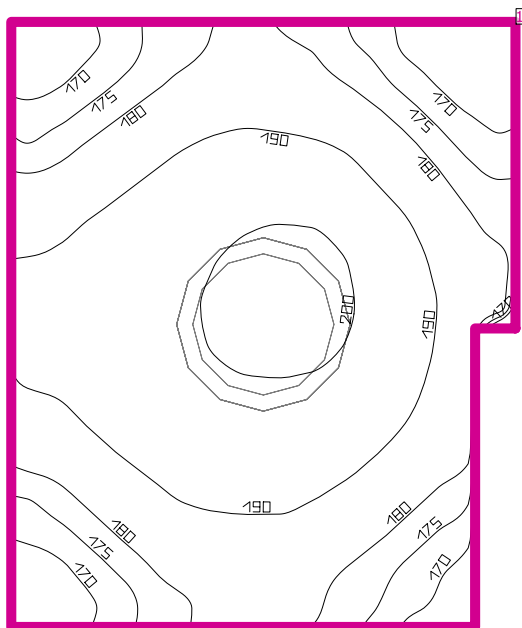
| Surface | Result | Average (Target) | Min | Max | Min/average | Min/max |
|---------------|--|------------------|-----|-----|-------------|---------|
| 1 Workplane 6 | Perpendicular illuminance (adaptive) [lx] Height: 0.000 m, Wall zone: 0.000 m | 185 (≥ 500) | 157 | 207 | 0.85 | 0.76 |

| # | Luminaire | Φ(Luminaire) [lm] | Power [W] | Luminous efficacy [lm/W] |
|--------------------------|--|-------------------|-----------|--------------------------|
| 1 | LUXIONA Troll - AM500LEDXXXPCI65 AMETYST 500 LED 3800LM PC E IP65 830 | 2675 | 32.0 | 83.6 |
| Total via all luminaires | | 2675 | 32.0 | 83.6 |

Lighting power density: $17.18 \text{ W/m}^2 = 9.30 \text{ W/m}^2/100 \text{ lx}$ (Floor area of room 1.86 m^2)

The energy consumption quantities refer to the lights planned for the room without taking into account light scenes and their dimming levels.
Consumption: 88 kWh/a of maximum 100 kWh/a

88



Clearance height: 2.500 m, Reflection factors: Ceiling 70.0%, Walls 50.0%, Floor 20.0%, Maintenance factor: 0.80

Workplane

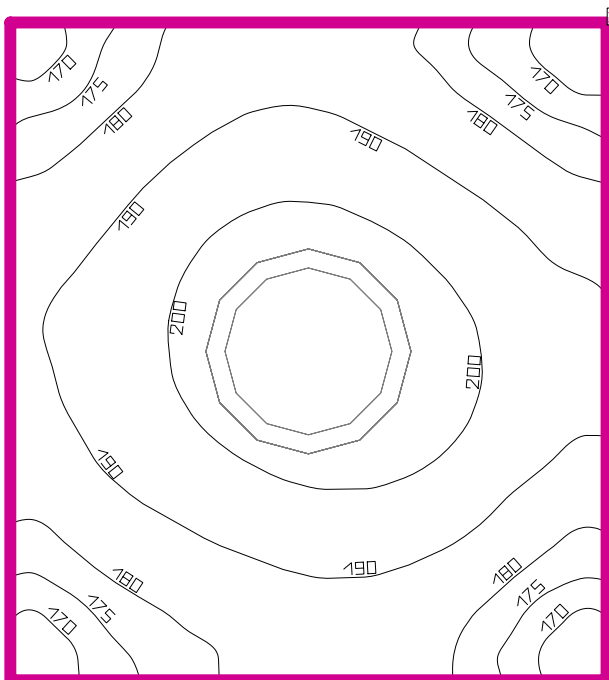
| Surface | Result | Average (Target) | Min | Max | Min/average | Min/max |
|---------------|--|------------------|-----|-----|-------------|---------|
| 1 Workplane 7 | Perpendicular illuminance (adaptive) [lx] Height: 0.000 m, Wall zone: 0.000 m | 186 (≥ 500) | 161 | 202 | 0.87 | 0.80 |

| # Luminaire | Φ(Luminaire) [lm] | Power [W] | Luminous efficacy [lm/W] |
|--|-------------------|-----------|--------------------------|
| 1 LUXIONA Troll - AM500LEDXXXPCI65 AMETYST 500 LED 3800LM PC E IP65 830 | 2675 | 32.0 | 83.6 |
| Total via all luminaires | 2675 | 32.0 | 83.6 |

Lighting power density: 17.77 W/m² = 9.55 W/m²/100 lx (Floor area of room 1.80 m²)

The energy consumption quantities refer to the lights planned for the room without taking into account light scenes and their dimming levels.
Consumption: 88 kWh/a of maximum 100 kWh/a

89



Clearance height: 2.500 m, Reflection factors: Ceiling 70.0%, Walls 50.0%, Floor 20.0%, Maintenance factor: 0.80

Workplane

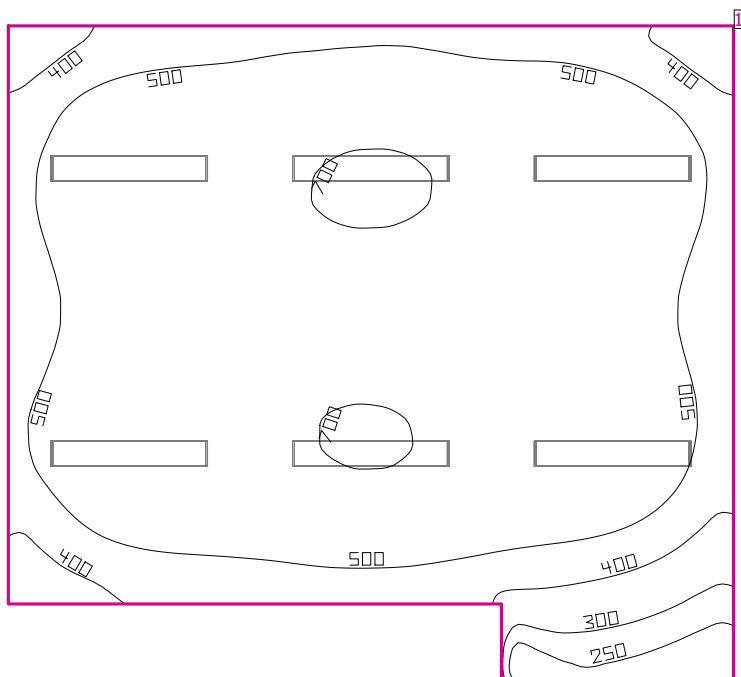
| Surface | Result | Average (Target) | Min | Max | Min/average | Min/max |
|---------------|--|------------------|-----|-----|-------------|---------|
| 1 Workplane 8 | Perpendicular illuminance (adaptive) [lx] Height: 0.000 m, Wall zone: 0.000 m | 189 (≥ 500) | 166 | 208 | 0.88 | 0.80 |

| # | Luminaire | Φ(Luminaire) [lm] | Power [W] | Luminous efficacy [lm/W] |
|--------------------------|--|-------------------|-----------|--------------------------|
| 1 | LUXIONA Troll - AM500LEDXXXPCI65 AMETYST 500 LED 3800LM PC E IP65 830 | 2675 | 32.0 | 83.6 |
| Total via all luminaires | | 2675 | 32.0 | 83.6 |

Lighting power density: 18.55 W/m² = 9.80 W/m²/100 lx (Floor area of room 1.72 m²)

The energy consumption quantities refer to the lights planned for the room without taking into account light scenes and their dimming levels.
Consumption: 88 kWh/a of maximum 100 kWh/a

90



Clearance height: 2.500 m, Reflection factors: Ceiling 70.0%, Walls 50.0%, Floor 20.0%, Maintenance factor: 0.80

Workplane

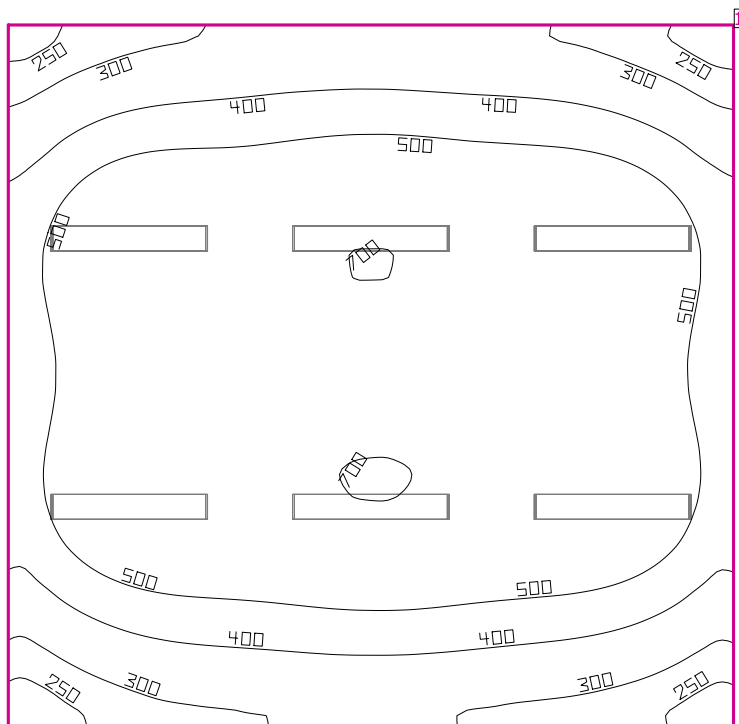
| Surface | Result | Average (Target) | Min | Max | Min/average | Min/max |
|---------------|--|------------------|-----|-----|-------------|---------|
| 1 Workplane 9 | Perpendicular illuminance (adaptive) [lx] Height: 0.800 m, Wall zone: 0.000 m | 561 (≥ 500) | 208 | 717 | 0.37 | 0.29 |

| # | Luminaire | Φ(Luminaire) [lm] | Power [W] | Luminous efficacy [lm/W] |
|--------------------------|--|-------------------|-----------|--------------------------|
| 6 | LUXIONA Troil - MELEDXXXOPAL METEOR LUX LED 5200LM OPAL E 840 | 4330 | 36.0 | 120.3 |
| Total via all luminaires | | 25980 | 216.0 | 120.3 |

Lighting power density: $7.71 \text{ W/m}^2 = 1.37 \text{ W/m}^2/100 \text{ lx}$ (Floor area of room 28.01 m²)

The energy consumption quantities refer to the lights planned for the room without taking into account light scenes and their dimming levels.
Consumption: 590 kWh/a of maximum 1000 kWh/a

91



Clearance height: 2.500 m, Reflection factors: Ceiling 70.0%, Walls 50.0%, Floor 20.0%, Maintenance factor: 0.80

Workplane

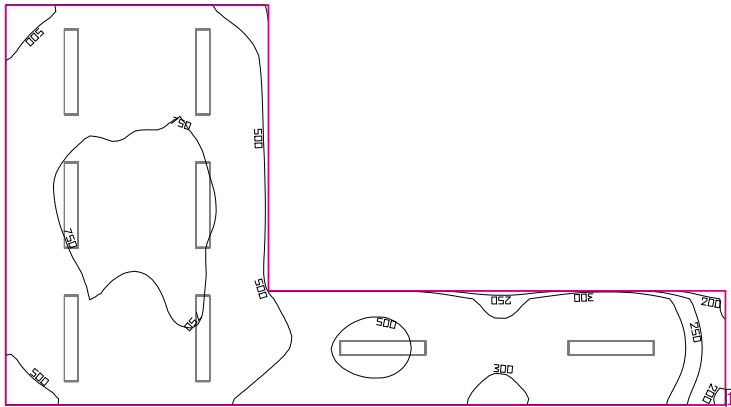
| Surface | Result | Average (Target) | Min | Max | Min/average | Min/max |
|----------------|--|------------------|-----|-----|-------------|---------|
| 1 Workplane 10 | Perpendicular illuminance (adaptive) [lx] Height: 0.800 m, Wall zone: 0.000 m | 511 (≥ 500) | 218 | 705 | 0.43 | 0.31 |

| # | Luminaire | Φ(Luminaire) [lm] | Power [W] | Luminous efficacy [lm/W] |
|--------------------------|--|-------------------|-----------|--------------------------|
| 6 | LUXIONA Troll - MELEDXXXOPAL METEOR LUX LED 5200LM OPAL E 840 | 4330 | 36.0 | 120.3 |
| Total via all luminaires | | 25980 | 216.0 | 120.3 |

Lighting power density: $6.62 \text{ W/m}^2 = 1.30 \text{ W/m}^2/100 \text{ lx}$ (Floor area of room 32.65 m^2)

The energy consumption quantities refer to the lights planned for the room without taking into account light scenes and their dimming levels.
Consumption: 590 kWh/a of maximum 1150 kWh/a

92



Clearance height: 2.800 m, Reflection factors: Ceiling 70.0%, Walls 50.0%, Floor 20.0%, Maintenance factor: 0.80

Workplane

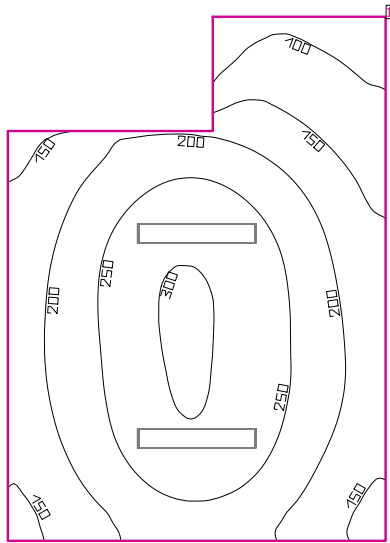
| Surface | Result | Average (Target) | Min | Max | Min/average | Min/max |
|----------------|--|------------------|-----|-----|-------------|---------|
| 1 Workplane 11 | Perpendicular illuminance (adaptive) [lx] Height: 0.800 m, Wall zone: 0.000 m | 575 (≥ 500) | 194 | 803 | 0.34 | 0.24 |

| # Luminaire | Φ(Luminaire) [lm] | Power [W] | Luminous efficacy [lm/W] |
|--|-------------------|-----------|--------------------------|
| 8 LUXIONA Troll - MELEDXXXOPAL METEOR LUX LED 5200LM OPAL E 840 | 4330 | 36.0 | 120.3 |
| Total via all luminaires | 34640 | 288.0 | 120.3 |

Lighting power density: $8.67 \text{ W/m}^2 = 1.51 \text{ W/m}^2/100 \text{ lx}$ (Floor area of room 33.21 m^2)

The energy consumption quantities refer to the lights planned for the room without taking into account light scenes and their dimming levels.
Consumption: 790 kWh/a of maximum 1200 kWh/a

93



Clearance height: 2.500 m, Reflection factors: Ceiling 70.0%, Walls 50.0%, Floor 20.0%, Maintenance factor: 0.80

Workplane

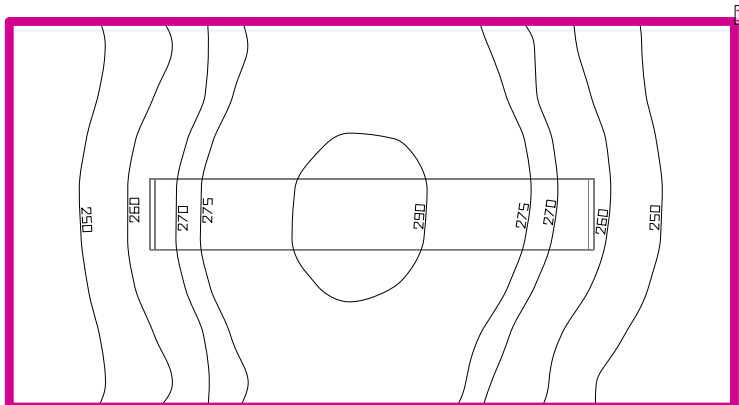
| Surface | Result | Average (Target) | Min | Max | Min/average | Min/max |
|----------------|--|------------------|------|-----|-------------|---------|
| 1 Workplane 12 | Perpendicular illuminance (adaptive) [lx] Height: 0.000 m, Wall zone: 0.000 m | 212 (≥ 500) | 70.6 | 305 | 0.33 | 0.23 |

| # | Luminaire | Φ(Luminaire) [lm] | Power [W] | Luminous efficacy [lm/W] |
|--------------------------|--|-------------------|-----------|--------------------------|
| 2 | LUXIONA Troll - MELEDXXXOPAL METEOR LUX LED 5200LM OPAL E 840 | 4330 | 36.0 | 120.3 |
| Total via all luminaires | | 8660 | 72.0 | 120.3 |

Lighting power density: $3.68 \text{ W/m}^2 = 1.74 \text{ W/m}^2/100 \text{ lx}$ (Floor area of room 19.57 m^2)

The energy consumption quantities refer to the lights planned for the room without taking into account light scenes and their dimming levels.
Consumption: 200 kWh/a of maximum 700 kWh/a

95



Clearance height: 2.500 m, Reflection factors: Ceiling 70.0%, Walls 50.0%, Floor 20.0%, Maintenance factor: 0.80

Workplane

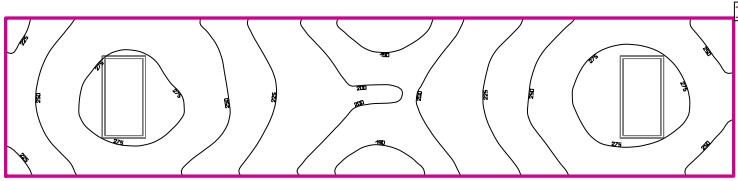
| Surface | Result | Average (Target) | Min | Max | Min/average | Min/max |
|----------------|--|------------------|-----|-----|-------------|---------|
| 1 Workplane 13 | Perpendicular illuminance (adaptive) [lx] Height: 0.000 m, Wall zone: 0.000 m | 267 (≥ 500) | 242 | 293 | 0.91 | 0.83 |

| # | Luminaire | Φ(Luminaire) [lm] | Power [W] | Luminous efficacy [lm/W] |
|--------------------------|--|-------------------|-----------|--------------------------|
| 1 | LUXIONA Troll - MELEDXXXOPAL METEOR LUX LED 5200LM OPAL E 840 | 4330 | 36.0 | 120.3 |
| Total via all luminaires | | 4330 | 36.0 | 120.3 |

Lighting power density: 16.11 W/m² = 6.04 W/m²/100 lx (Floor area of room 2.23 m²)

The energy consumption quantities refer to the lights planned for the room without taking into account light scenes and their dimming levels.
Consumption: 99 kWh/a of maximum 100 kWh/a

95



Clearance height: 2.500 m, Reflection factors: Ceiling 70.0%, Walls 50.0%, Floor 20.0%, Maintenance factor: 0.80

Workplane

| Surface | Result | Average (Target) | Min | Max | Min/average | Min/max |
|----------------|--|------------------|-----|-----|-------------|---------|
| 1 Workplane 14 | Perpendicular illuminance (adaptive) [lx] Height: 0.000 m, Wall zone: 0.000 m | 241 (≥ 500) | 184 | 290 | 0.76 | 0.63 |

| # | Luminaire | Φ(Luminaire) [lm] | Power [W] | Luminous efficacy [lm/W] |
|--------------------------|---|-------------------|-----------|--------------------------|
| 2 | LUXIONA Troll - RLOOKLEDXX_XXPLXEI44 RUBIN LOOK LED 4400LM PLX E IP44 34 840 / 600X300 | 3511 | 32.0 | 109.7 |
| Total via all luminaires | | 7022 | 64.0 | 109.7 |

Lighting power density: $9.81 \text{ W/m}^2 = 4.08 \text{ W/m}^2/100 \text{ lx}$ (Floor area of room 6.52 m^2)

The energy consumption quantities refer to the lights planned for the room without taking into account light scenes and their dimming levels.
Consumption: 180 kWh/a of maximum 250 kWh/a