

## **Pildas skola 2.stavs**

## Table of contents

### Pildas skola 2.stavs

Luminaire parts list..... 3

#### Site 1

##### Building 1

##### Storey 1

##### 59

Room summary..... 5

##### 60

Room summary..... 6

##### 61

Room summary..... 7

##### 62

Room summary..... 8

##### 63

Room summary..... 9

##### 64

Room summary..... 10

##### 65

Room summary..... 11

##### 66

Room summary..... 12

##### 67

Room summary..... 13

##### 68

Room summary..... 14

##### 69

Room summary..... 15

##### 70

Room summary..... 16

##### 71

Room summary..... 17

##### 72

Room summary..... 18

##### 73

Room summary..... 19

##### 74

Room summary..... 20

##### 75

Room summary..... 21

##### 76

Room summary..... 22

##### 77

Room summary..... 23

##### 78

Room summary..... 24

##### 79

Room summary..... 25

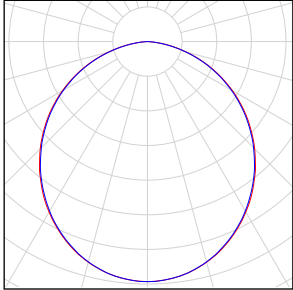
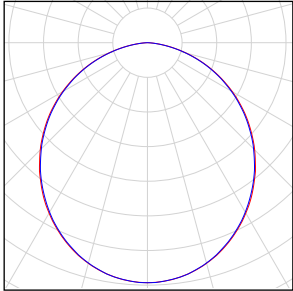
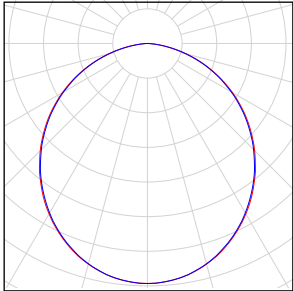
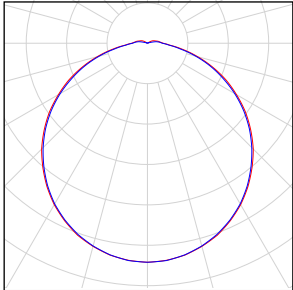
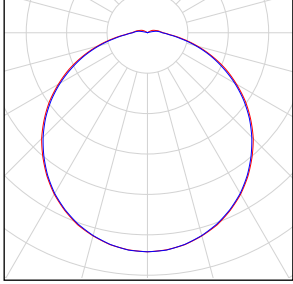
##### 80

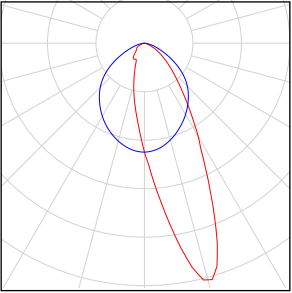
Room summary..... 26

##### 81

Room summary..... 27

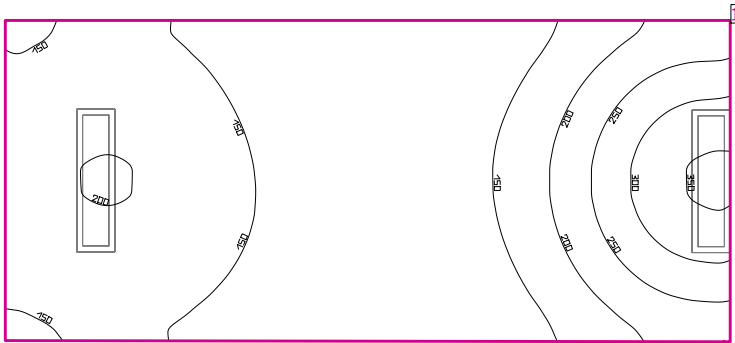
## Pildas skola 2.stavs

Quantity	Luminaire (Luminous emittance)		
2	<p>LUXIONA POLAND S.A. - RLOOKLEDXX_XXMPRMEI44 RUBIN LOOK LED 2600LM PLX E IP44 21 840 / 600X300 Luminous emittance 1 Fitting: 1x2600lm Light output ratio: 74.52% Lamp luminous flux: 2600 lm Luminaire luminous flux: 1937 lm Power: 22.0 W Luminous efficacy: 88.1 lm/W</p> <p>Colourimetric data 1x: CCT 4000 K, CRI 80</p>	See our luminaire catalog for an image of the luminaire.	
88	<p>LUXIONA POLAND S.A. - RLOOKLEDXX_XXMPRMEI44 RUBIN LOOK LED 3900LM PLX E IP44 21 840 / 600X600 Luminous emittance 1 Fitting: 1x3900lm Light output ratio: 74.52% Lamp luminous flux: 3900 lm Luminaire luminous flux: 2906 lm Power: 33.0 W Luminous efficacy: 88.1 lm/W</p> <p>Colourimetric data 1x: CCT 4000 K, CRI 80</p>	See our luminaire catalog for an image of the luminaire.	
22	<p>LUXIONA POLAND S.A. - RLOOKLEDXX_XXMPRMEI44 RUBIN LOOK LED 5200LM PLX E IP44 21 840 / 1200X300 Luminous emittance 1 Fitting: 1x5200lm Light output ratio: 74.52% Lamp luminous flux: 5200 lm Luminaire luminous flux: 3875 lm Power: 43.0 W Luminous efficacy: 90.1 lm/W</p> <p>Colourimetric data 1x: CCT 4000 K, CRI 80</p>	See our luminaire catalog for an image of the luminaire.	
4	<p>LUXIONA Troll - AM500LEDXXXPCI65 AMETYST 500 LED 2700LM PC E IP65 840 Luminous emittance 1 Fitting: 1xLED 2990/840 Light output ratio: 67.73% Lamp luminous flux: 2990 lm Luminaire luminous flux: 2025 lm Power: 20.0 W Luminous efficacy: 101.3 lm/W</p> <p>Colourimetric data 1x: CCT 4000 K, CRI 80</p>	See our luminaire catalog for an image of the luminaire.	
3	<p>LUXIONA Troll - AM500LEDXXXPCI65 AMETYST 500 LED 3800LM PC E IP65 830 Luminous emittance 1 Fitting: 1xLED 3950/830 Light output ratio: 67.73% Lamp luminous flux: 3950 lm Luminaire luminous flux: 2675 lm Power: 32.0 W Luminous efficacy: 83.6 lm/W</p> <p>Colourimetric data 1xLED 3950/830: CCT 4000 K, CRI 80</p>	See our luminaire catalog for an image of the luminaire.	

Quantity	Luminaire (Luminous emittance)		
7	<p>LUXIONA Troil - ARUN_SLIM_LED_XXX_OPTICS-3 ARUNA SLIM N LED 4000LM OPTICS-3 E 34 840 L-1200</p> <p>Luminous emittance 1 Fitting: 1xModuA, LED LINEAR 4000lm/840 Light output ratio: 92.03% Lamp luminous flux: 4099 lm Luminaire luminous flux: 3772 lm Power: 32.0 W Luminous efficacy: 117.9 lm/W</p> <p>Colourimetric data 1x: CCT 4000 K, CRI 85</p>	<p>See our luminaire catalog for an image of the luminaire.</p>	

Total lamp luminous flux: 515303 lm, Total luminaire luminous flux: 387381 lm, Total Load: 4294.0 W, Luminous efficacy: 90.2 lm/W

## 59



Clearance height: 2.900 m, Reflection factors: Ceiling 70.0%, Walls 50.0%, Floor 20.0%, Maintenance factor: 0.80

## Workplane

Surface	Result	Average (Target)	Min	Max	Min/average	Min/max
1 Workplane 1	Perpendicular illuminance (adaptive) [lx] Height: 0.000 m, Wall zone: 0.000 m	173 (≥ 500)	100	358	0.58	0.28

#	Luminaire	Φ(Luminaire) [lm]	Power [W]	Luminous efficacy [lm/W]
2	LUXIONA POLAND S.A. - RLOOKLEDXX_XXMPRMEI44 RUBIN LOOK LED 5200LM PLX E IP44 21 840 / 1200X300	3875	43.0	90.1
Total via all luminaires		7750	86.0	90.1

Lighting power density:  $5.05 \text{ W/m}^2 = 2.92 \text{ W/m}^2/100 \text{ lx}$  (Floor area of room  $17.03 \text{ m}^2$ )

The energy consumption quantities refer to the lights planned for the room without taking into account light scenes and their dimming levels.  
Consumption: 240 kWh/a of maximum 600 kWh/a

## 60



Clearance height: 2.900 m, Reflection factors: Ceiling 70.0%, Walls 50.0%, Floor 20.0%, Maintenance factor: 0.80

## Workplane

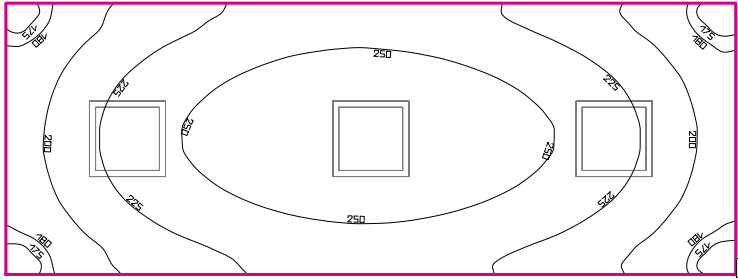
Surface	Result	Average (Target)	Min	Max	Min/average	Min/max
1 Workplane 2	Perpendicular illuminance (adaptive) [lx] Height: 0.000 m, Wall zone: 0.000 m	143 (≥ 500)	67.8	198	0.47	0.34

#	Luminaire	Φ(Luminaire) [lm]	Power [W]	Luminous efficacy [lm/W]
9	LUXIONA POLAND S.A. - RLOOKLEDXX_XXMPRMEI44 RUBIN LOOK LED 5200LM PLX E IP44 21 840 / 1200X300	3875	43.0	90.1
Total via all luminaires		34875	387.0	90.1

Lighting power density:  $3.26 \text{ W/m}^2 = 2.28 \text{ W/m}^2/100 \text{ lx}$  (Floor area of room  $118.76 \text{ m}^2$ )

The energy consumption quantities refer to the lights planned for the room without taking into account light scenes and their dimming levels.  
Consumption: 1050 kWh/a of maximum 4200 kWh/a

## 61



Clearance height: 2.900 m, Reflection factors: Ceiling 70.0%, Walls 50.0%, Floor 20.0%, Maintenance factor: 0.80

## Workplane

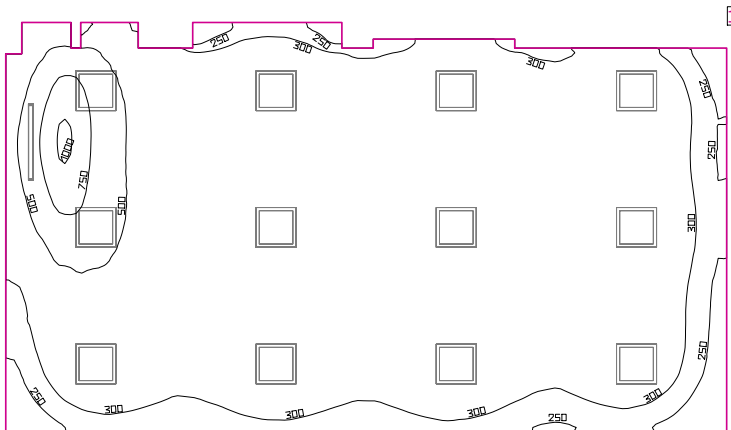
Surface	Result	Average (Target)	Min	Max	Min/average	Min/max
1 Workplane 3	Perpendicular illuminance (adaptive) [lx] Height: 0.000 m, Wall zone: 0.000 m	229 (≥ 500)	170	272	0.74	0.63

#	Luminaire	Φ(Luminaire) [lm]	Power [W]	Luminous efficacy [lm/W]
3	LUXIONA POLAND S.A. - RLOOKLEDXX_XXMPRMEI44 RUBIN LOOK LED 3900LM PLX E IP44 21 840 / 600X600	2906	33.0	88.1
Total via all luminaires		8718	99.0	88.1

Lighting power density:  $7.40 \text{ W/m}^2 = 3.23 \text{ W/m}^2/100 \text{ lx}$  (Floor area of room  $13.38 \text{ m}^2$ )

The energy consumption quantities refer to the lights planned for the room without taking into account light scenes and their dimming levels.  
Consumption: 270 kWh/a of maximum 500 kWh/a

## 62



Clearance height: 2.850 m, Reflection factors: Ceiling 70.0%, Walls 50.0%, Floor 20.0%, Maintenance factor: 0.80

## Workplane

Surface	Result	Average (Target)	Min	Max	Min/average	Min/max
1 Workplane 4	Perpendicular illuminance (adaptive) [lx] Height: 0.800 m, Wall zone: 0.000 m	382 (≥ 500)	182	1037	0.48	0.18

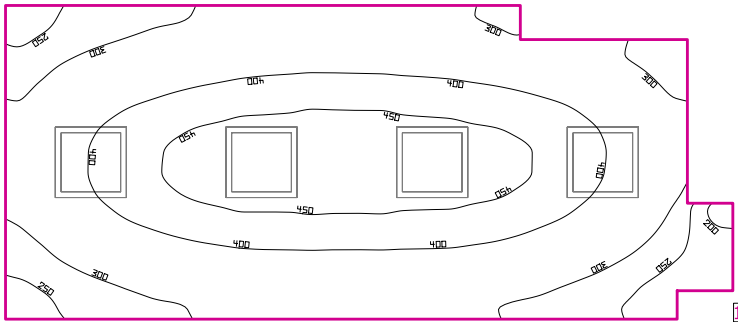
#	Luminaire	Φ(Luminaire) [lm]	Power [W]	Luminous efficacy [lm/W]
12	LUXIONA POLAND S.A. - RLOOKLEDXX_XXMPRMEI44 RUBIN LOOK LED 3900LM PLX E IP44 21 840 / 600X600	2906	33.0	88.1
1	LUXIONA Troll - ARUN_SLIM_LED_XXX_OPTICS-3 ARUNA SLIM N LED 4000LM OPTICS-3 E 34 840 L-1200	3772	32.0	117.9
Total via all luminaires		38644	428.0	90.3

Lighting power density:  $6.16 \text{ W/m}^2 = 1.62 \text{ W/m}^2/100 \text{ lx}$  (Floor area of room  $69.45 \text{ m}^2$ )

The energy consumption quantities refer to the lights planned for the room without taking into account light scenes and their dimming levels.  
Consumption: 1200 kWh/a of maximum 2450 kWh/a



## 63



Clearance height: 2.850 m, Reflection factors: Ceiling 70.0%, Walls 50.0%, Floor 20.0%, Maintenance factor: 0.80

## Workplane

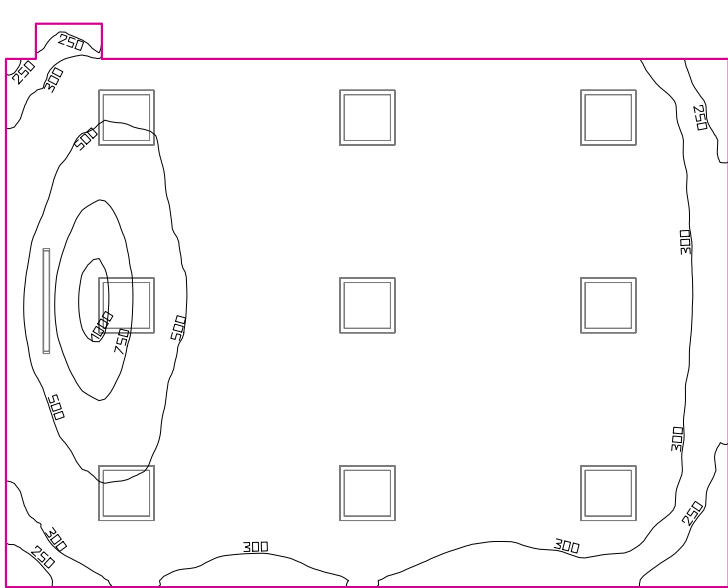
Surface	Result	Average (Target)	Min	Max	Min/average	Min/max
1 Workplane 5	Perpendicular illuminance (adaptive) [lx] Height: 0.800 m, Wall zone: 0.000 m	367 (≥ 500)	171	480	0.47	0.36

#	Luminaire	Φ(Luminaire) [lm]	Power [W]	Luminous efficacy [lm/W]
4	LUXIONA POLAND S.A. - RLOOKLEDXX_XXMPRMEI44 RUBIN LOOK LED 3900LM PLX E IP44 21 840 / 600X600	2906	33.0	88.1
Total via all luminaires		11624	132.0	88.1

Lighting power density:  $8.05 \text{ W/m}^2 = 2.19 \text{ W/m}^2/100 \text{ lx}$  (Floor area of room  $16.40 \text{ m}^2$ )

The energy consumption quantities refer to the lights planned for the room without taking into account light scenes and their dimming levels.  
Consumption: 360 kWh/a of maximum 600 kWh/a

## 64



Clearance height: 2.850 m, Reflection factors: Ceiling 70.0%, Walls 50.0%, Floor 20.0%, Maintenance factor: 0.80

## Workplane

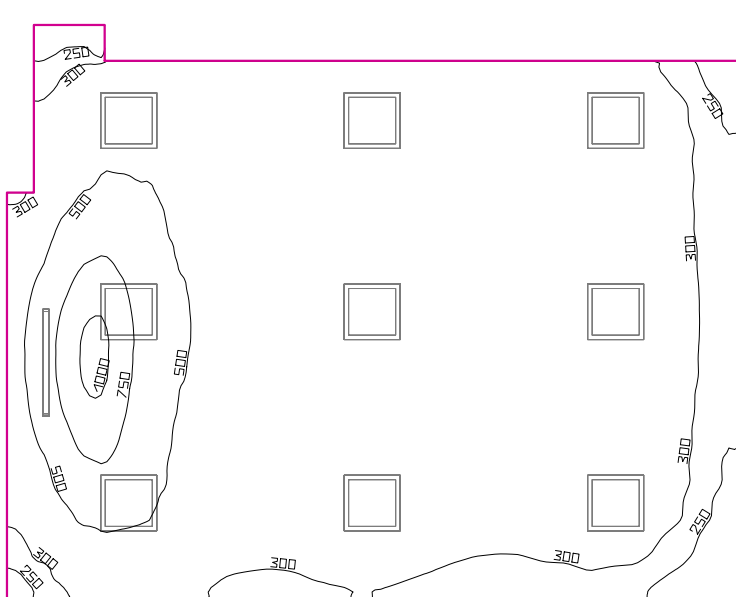
Surface	Result	Average (Target)	Min	Max	Min/average	Min/max
1 Workplane 6	Perpendicular illuminance (adaptive) [lx] Height: 0.800 m, Wall zone: 0.000 m	403 (≥ 500)	183	1077	0.45	0.17

#	Luminaire	Φ(Luminaire) [lm]	Power [W]	Luminous efficacy [lm/W]
9	LUXIONA POLAND S.A. - RLOOKLEDXX_XXMPRMEI44 RUBIN LOOK LED 3900LM PLX E IP44 21 840 / 600X600	2906	33.0	88.1
1	LUXIONA TroII - ARUN_SLIM_LED_XXX_OPTICS-3 ARUNA SLIM N LED 4000LM OPTICS-3 E 34 840 L-1200	3772	32.0	117.9
Total via all luminaires		29926	329.0	91.0

Lighting power density:  $6.64 \text{ W/m}^2 = 1.65 \text{ W/m}^2/100 \text{ lx}$  (Floor area of room 49.56 m<sup>2</sup>)

The energy consumption quantities refer to the lights planned for the room without taking into account light scenes and their dimming levels.  
Consumption: 900 kWh/a of maximum 1750 kWh/a

## 65



Clearance height: 2.850 m, Reflection factors: Ceiling 70.0%, Walls 50.0%, Floor 20.0%, Maintenance factor: 0.80

## Workplane

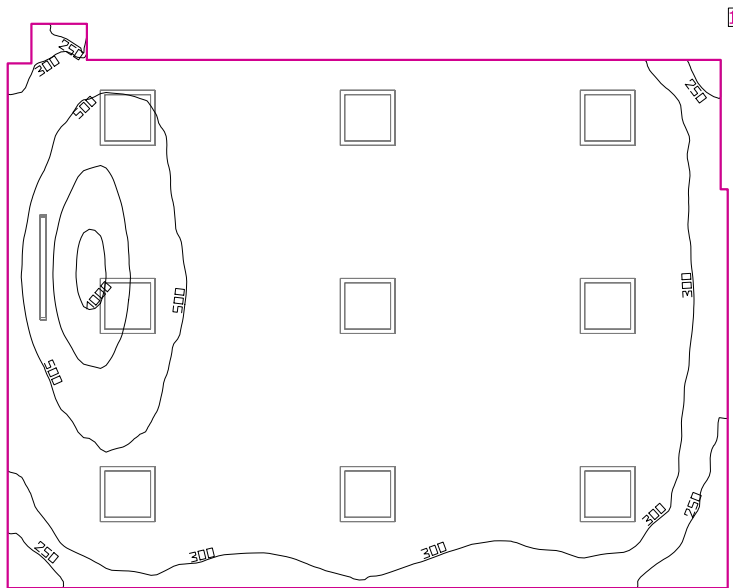
Surface	Result	Average (Target)	Min	Max	Min/average	Min/max
1 Workplane 7	Perpendicular illuminance (adaptive) [lx] Height: 0.800 m, Wall zone: 0.000 m	407 (≥ 500)	184	1066	0.45	0.17

#	Luminaire	Φ(Luminaire) [lm]	Power [W]	Luminous efficacy [lm/W]
9	LUXIONA POLAND S.A. - RLOOKLEDXX_XXMPRMEI44 RUBIN LOOK LED 3900LM PLX E IP44 21 840 / 600X600	2906	33.0	88.1
1	LUXIONA Troil - ARUN_SLIM_LED_XXX_OPTICS-3 ARUNA SLIM N LED 4000LM OPTICS-3 E 34 840 L-1200	3772	32.0	117.9
Total via all luminaires		29926	329.0	91.0

Lighting power density:  $6.75 \text{ W/m}^2 = 1.66 \text{ W/m}^2/100 \text{ lx}$  (Floor area of room  $48.77 \text{ m}^2$ )

The energy consumption quantities refer to the lights planned for the room without taking into account light scenes and their dimming levels.  
Consumption: 900 kWh/a of maximum 1750 kWh/a

66



Clearance height: 2.850 m, Reflection factors: Ceiling 70.0%, Walls 50.0%, Floor 20.0%, Maintenance factor: 0.80

### Workplane

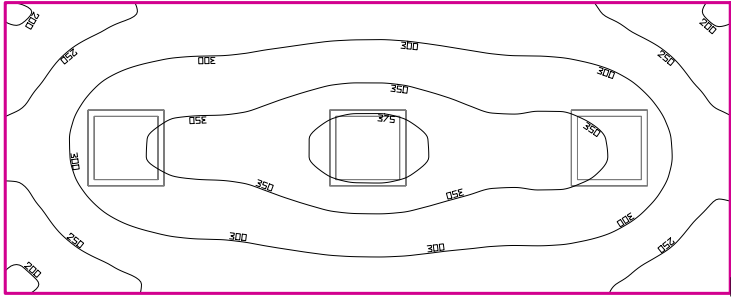
Surface	Result	Average (Target)	Min	Max	Min/average	Min/max
1 Workplane 8	Perpendicular illuminance (adaptive) [lx] Height: 0.800 m, Wall zone: 0.000 m	404 (≥ 500)	177	1072	0.44	0.17

#	Luminaire	Φ(Luminaire) [lm]	Power [W]	Luminous efficacy [lm/W]
9	LUXIONA POLAND S.A. - RLOOKLEDXX_XXMPRMEI44 RUBIN LOOK LED 3900LM PLX E IP44 21 840 / 600X600	2906	33.0	88.1
1	LUXIONA Troil - ARUN_SLIM_LED_XXX_OPTICS-3 ARUNA SLIM N LED 4000LM OPTICS-3 E 34 840 L-1200	3772	32.0	117.9
Total via all luminaires		29926	329.0	91.0

Lighting power density:  $6.69 \text{ W/m}^2 = 1.65 \text{ W/m}^2/100 \text{ lx}$  (Floor area of room  $49.21 \text{ m}^2$ )

The energy consumption quantities refer to the lights planned for the room without taking into account light scenes and their dimming levels.  
Consumption: 900 kWh/a of maximum 1750 kWh/a

## 67



Clearance height: 2.850 m, Reflection factors: Ceiling 70.0%, Walls 50.0%, Floor 20.0%, Maintenance factor: 0.80

## Workplane

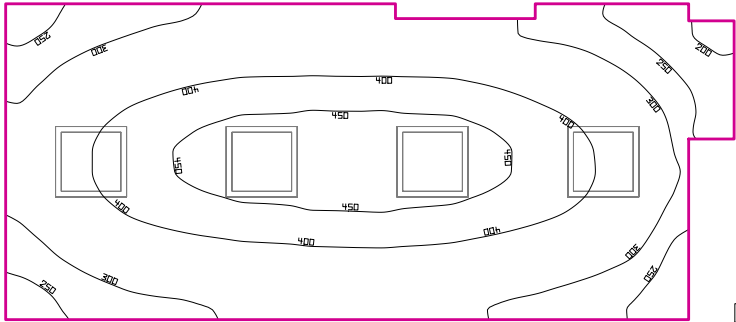
Surface	Result	Average (Target)	Min	Max	Min/average	Min/max
1 Workplane 9	Perpendicular illuminance (adaptive) [lx] Height: 0.800 m, Wall zone: 0.000 m	302 (≥ 500)	195	385	0.65	0.51

#	Luminaire	Φ(Luminaire) [lm]	Power [W]	Luminous efficacy [lm/W]
3	LUXIONA POLAND S.A. - RLOOKLEDXX_XXMPRMEI44 RUBIN LOOK LED 3900LM PLX E IP44 21 840 / 600X600	2906	33.0	88.1
Total via all luminaires		8718	99.0	88.1

Lighting power density:  $6.95 \text{ W/m}^2 = 2.30 \text{ W/m}^2/100 \text{ lx}$  (Floor area of room  $14.24 \text{ m}^2$ )

The energy consumption quantities refer to the lights planned for the room without taking into account light scenes and their dimming levels.  
Consumption: 270 kWh/a of maximum 500 kWh/a

## 68



Clearance height: 2.850 m, Reflection factors: Ceiling 70.0%, Walls 50.0%, Floor 20.0%, Maintenance factor: 0.80

## Workplane

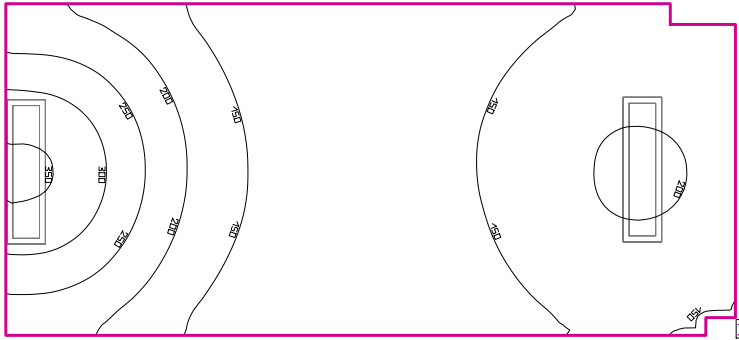
Surface	Result	Average (Target)	Min	Max	Min/average	Min/max
1 Workplane 10	Perpendicular illuminance (adaptive) [lx] Height: 0.800 m, Wall zone: 0.000 m	359 (≥ 500)	186	482	0.52	0.39

#	Luminaire	Φ(Luminaire) [lm]	Power [W]	Luminous efficacy [lm/W]
4	LUXIONA POLAND S.A. - RLOOKLEDXX_XXMPRMEI44 RUBIN LOOK LED 3900LM PLX E IP44 21 840 / 600X600	2906	33.0	88.1
Total via all luminaires		11624	132.0	88.1

Lighting power density:  $7.78 \text{ W/m}^2 = 2.17 \text{ W/m}^2/100 \text{ lx}$  (Floor area of room  $16.96 \text{ m}^2$ )

The energy consumption quantities refer to the lights planned for the room without taking into account light scenes and their dimming levels.  
Consumption: 360 kWh/a of maximum 600 kWh/a

69



Clearance height: 2.850 m, Reflection factors: Ceiling 70.0%, Walls 50.0%, Floor 20.0%, Maintenance factor: 0.80

### Workplane

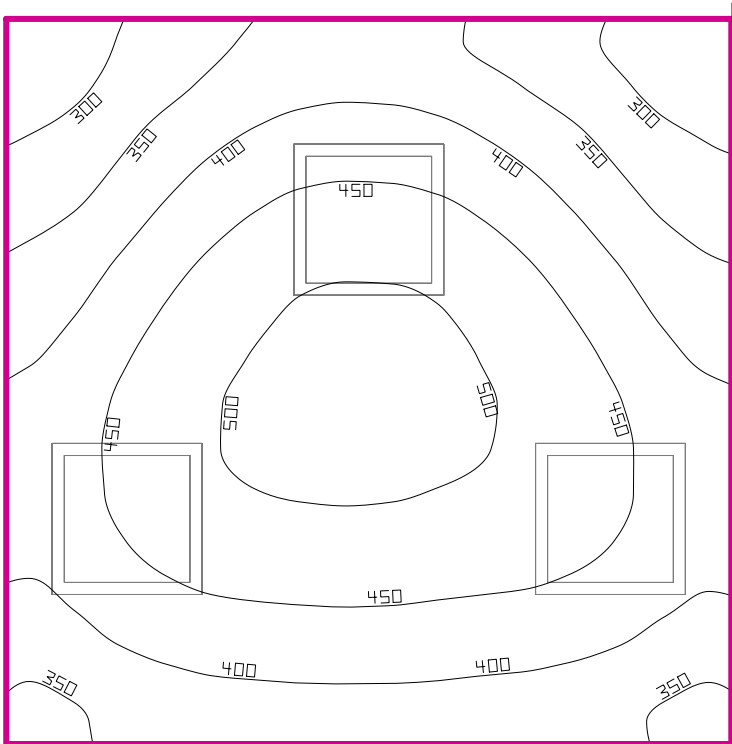
Surface	Result	Average (Target)	Min	Max	Min/average	Min/max
1 Workplane 11	Perpendicular illuminance (adaptive) [lx] Height: 0.000 m, Wall zone: 0.000 m	175 (≥ 500)	101	359	0.58	0.28

# Luminaire	Φ(Luminaire) [lm]	Power [W]	Luminous efficacy [lm/W]
2 LUXIONA POLAND S.A. - RLOOKLEDXX_XXMPRMEI44 RUBIN LOOK LED 5200LM PLX E IP44 21 840 / 1200X300	3875	43.0	90.1
Total via all luminaires	7750	86.0	90.1

Lighting power density:  $5.03 \text{ W/m}^2 = 2.87 \text{ W/m}^2/100 \text{ lx}$  (Floor area of room  $17.11 \text{ m}^2$ )

The energy consumption quantities refer to the lights planned for the room without taking into account light scenes and their dimming levels.  
Consumption: 240 kWh/a of maximum 600 kWh/a

## 70



Clearance height: 2.850 m, Reflection factors: Ceiling 70.0%, Walls 50.0%, Floor 20.0%, Maintenance factor: 0.80

## Workplane

Surface	Result	Average (Target)	Min	Max	Min/average	Min/max
1 Workplane 12	Perpendicular illuminance (adaptive) [lx] Height: 0.800 m, Wall zone: 0.000 m	417 (≥ 500)	263	519	0.63	0.51

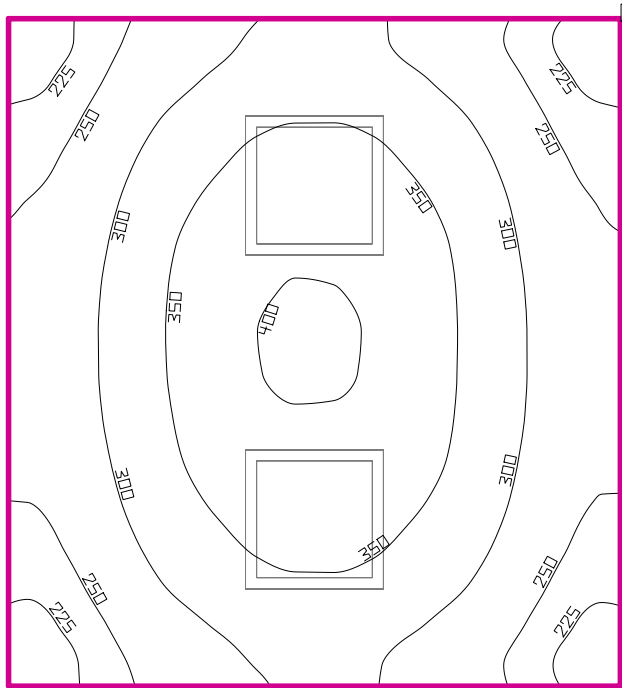
#	Luminaire	Φ(Luminaire) [lm]	Power [W]	Luminous efficacy [lm/W]
3	LUXIONA POLAND S.A. - RLOOKLEDXX_XXMPRMEI44 RUBIN LOOK LED 3900LM PLX E IP44 21 840 / 600X600	2906	33.0	88.1
Total via all luminaires		8718	99.0	88.1

Lighting power density: 11.00 W/m<sup>2</sup> = 2.64 W/m<sup>2</sup>/100 lx (Floor area of room 9.00 m<sup>2</sup>)

The energy consumption quantities refer to the lights planned for the room without taking into account light scenes and their dimming levels.  
Consumption: 270 kWh/a of maximum 350 kWh/a



71



Clearance height: 2.850 m, Reflection factors: Ceiling 70.0%, Walls 50.0%, Floor 20.0%, Maintenance factor: 0.80

### Workplane

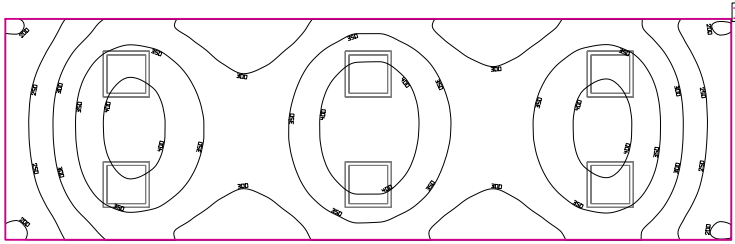
Surface	Result	Average (Target)	Min	Max	Min/average	Min/max
1 Workplane 13	Perpendicular illuminance (adaptive) [lx] Height: 0.800 m, Wall zone: 0.000 m	309 (≥ 500)	210	407	0.68	0.52

#	Luminaire	Φ(Luminaire) [lm]	Power [W]	Luminous efficacy [lm/W]
2	LUXIONA POLAND S.A. - RLOOKLEDXX_XXMPRMEI44 RUBIN LOOK LED 3900LM PLX E IP44 21 840 / 600X600	2906	33.0	88.1
Total via all luminaires		5812	66.0	88.1

Lighting power density:  $8.00 \text{ W/m}^2 = 2.59 \text{ W/m}^2/100 \text{ lx}$  (Floor area of room  $8.25 \text{ m}^2$ )

The energy consumption quantities refer to the lights planned for the room without taking into account light scenes and their dimming levels.  
Consumption: 180 kWh/a of maximum 300 kWh/a

## 72



Clearance height: 2.850 m, Reflection factors: Ceiling 70.0%, Walls 50.0%, Floor 20.0%, Maintenance factor: 0.80

## Workplane

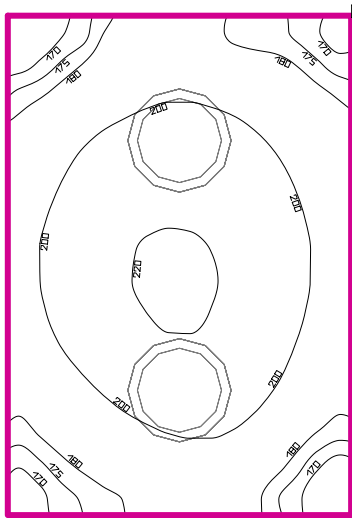
Surface	Result	Average (Target)	Min	Max	Min/average	Min/max
1 Workplane 14	Perpendicular illuminance (adaptive) [lx] Height: 0.800 m, Wall zone: 0.000 m	330 (≥ 500)	192	443	0.58	0.43

#	Luminaire	Φ(Luminaire) [lm]	Power [W]	Luminous efficacy [lm/W]
6	LUXIONA POLAND S.A. - RLOOKLEDXX_XXMPRMEI44 RUBIN LOOK LED 3900LM PLX E IP44 21 840 / 600X600	2906	33.0	88.1
Total via all luminaires		17436	198.0	88.1

Lighting power density:  $6.69 \text{ W/m}^2 = 2.03 \text{ W/m}^2/100 \text{ lx}$  (Floor area of room  $29.58 \text{ m}^2$ )

The energy consumption quantities refer to the lights planned for the room without taking into account light scenes and their dimming levels.  
Consumption: 540 kWh/a of maximum 1050 kWh/a

## 73



Clearance height: 2.850 m, Reflection factors: Ceiling 70.0%, Walls 50.0%, Floor 20.0%, Maintenance factor: 0.80

## Workplane

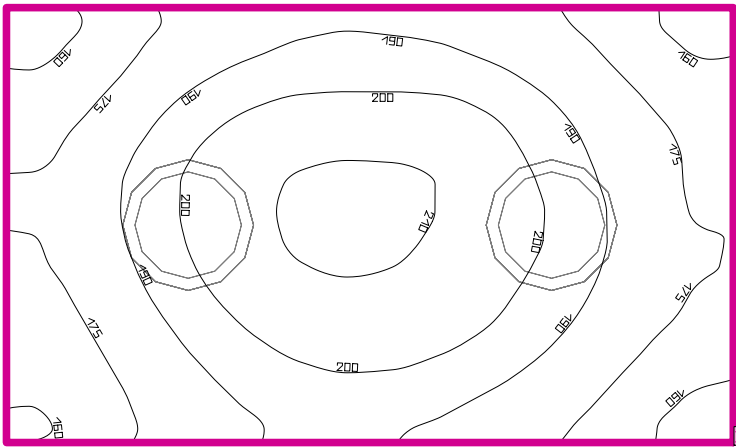
Surface	Result	Average (Target)	Min	Max	Min/average	Min/max
1 Workplane 15	Perpendicular illuminance (adaptive) [lx] Height: 0.000 m, Wall zone: 0.000 m	196 (≥ 500)	161	222	0.82	0.73

#	Luminaire	Φ(Luminaire) [lm]	Power [W]	Luminous efficacy [lm/W]
2	LUXIONA Troil - AM500LEDXXXPCI65 AMETYST 500 LED 2700LM PC E IP65 840	2025	20.0	101.3
Total via all luminaires		4050	40.0	101.3

Lighting power density:  $13.45 \text{ W/m}^2 = 6.85 \text{ W/m}^2/100 \text{ lx}$  (Floor area of room  $2.97 \text{ m}^2$ )

The energy consumption quantities refer to the lights planned for the room without taking into account light scenes and their dimming levels.  
Consumption: 110 kWh/a of maximum 150 kWh/a

74



Clearance height: 2.850 m, Reflection factors: Ceiling 70.0%, Walls 50.0%, Floor 20.0%, Maintenance factor: 0.80

### Workplane

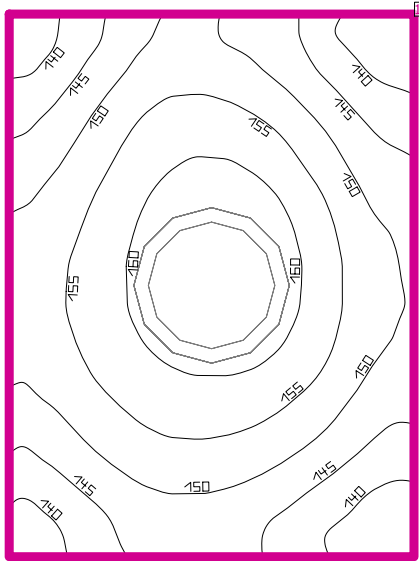
Surface	Result	Average (Target)	Min	Max	Min/average	Min/max
1 Workplane 16	Perpendicular illuminance (adaptive) [lx] Height: 0.000 m, Wall zone: 0.000 m	188 (≥ 500)	153	212	0.81	0.72

#	Luminaire	Φ(Luminaire) [lm]	Power [W]	Luminous efficacy [lm/W]
2	LUXIONA Troll - AM500LEDXXXPCI65 AMETYST 500 LED 2700LM PC E IP65 840	2025	20.0	101.3
Total via all luminaires		4050	40.0	101.3

Lighting power density:  $11.70 \text{ W/m}^2 = 6.23 \text{ W/m}^2/100 \text{ lx}$  (Floor area of room  $3.42 \text{ m}^2$ )

The energy consumption quantities refer to the lights planned for the room without taking into account light scenes and their dimming levels.  
Consumption: 110 kWh/a of maximum 150 kWh/a

## 75



Clearance height: 2.850 m, Reflection factors: Ceiling 70.0%, Walls 50.0%, Floor 20.0%, Maintenance factor: 0.80

## Workplane

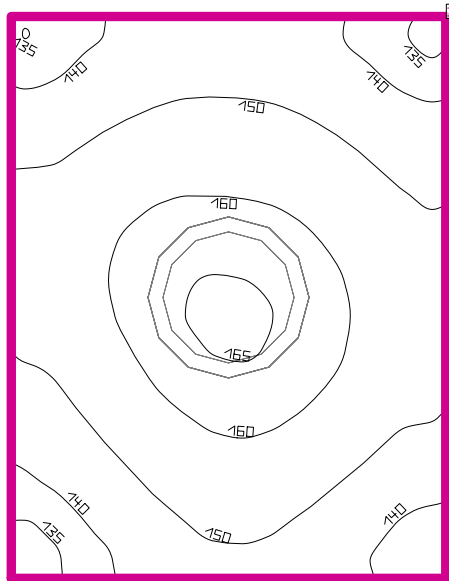
Surface	Result	Average (Target)	Min	Max	Min/average	Min/max
1 Workplane 17	Perpendicular illuminance (adaptive) [lx] Height: 0.000 m, Wall zone: 0.000 m	152 (≥ 500)	135	165	0.89	0.82

#	Luminaire	Φ(Luminaire) [lm]	Power [W]	Luminous efficacy [lm/W]
1	LUXIONA Troll - AM500LEDXXXPCI65 AMETYST 500 LED 3800LM PC E IP65 830	2675	32.0	83.6
Total via all luminaires		2675	32.0	83.6

Lighting power density:  $19.05 \text{ W/m}^2 = 12.57 \text{ W/m}^2/100 \text{ lx}$  (Floor area of room  $1.68 \text{ m}^2$ )

The energy consumption quantities refer to the lights planned for the room without taking into account light scenes and their dimming levels.  
Consumption: 88 kWh/a of maximum 100 kWh/a

76



Clearance height: 2.850 m, Reflection factors: Ceiling 70.0%, Walls 50.0%, Floor 20.0%, Maintenance factor: 0.80

### Workplane

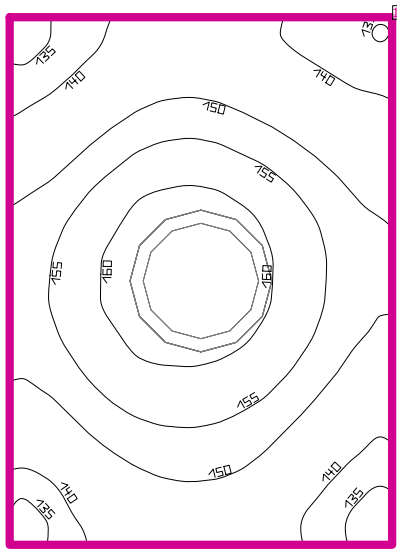
Surface	Result	Average (Target)	Min	Max	Min/average	Min/max
1 Workplane 18	Perpendicular illuminance (adaptive) [lx] Height: 0.000 m, Wall zone: 0.000 m	152 (≥ 500)	133	166	0.88	0.80

# Luminaire	Φ(Luminaire) [lm]	Power [W]	Luminous efficacy [lm/W]
1 LUXIONA Troll - AM500LEDXXXPCI65 AMETYST 500 LED 3800LM PC E IP65 830	2675	32.0	83.6
Total via all luminaires	2675	32.0	83.6

Lighting power density:  $18.39 \text{ W/m}^2 = 12.13 \text{ W/m}^2/100 \text{ lx}$  (Floor area of room  $1.74 \text{ m}^2$ )

The energy consumption quantities refer to the lights planned for the room without taking into account light scenes and their dimming levels.  
Consumption: 88 kWh/a of maximum 100 kWh/a

77



Clearance height: 2.850 m, Reflection factors: Ceiling 70.0%, Walls 50.0%, Floor 20.0%, Maintenance factor: 0.80

### Workplane

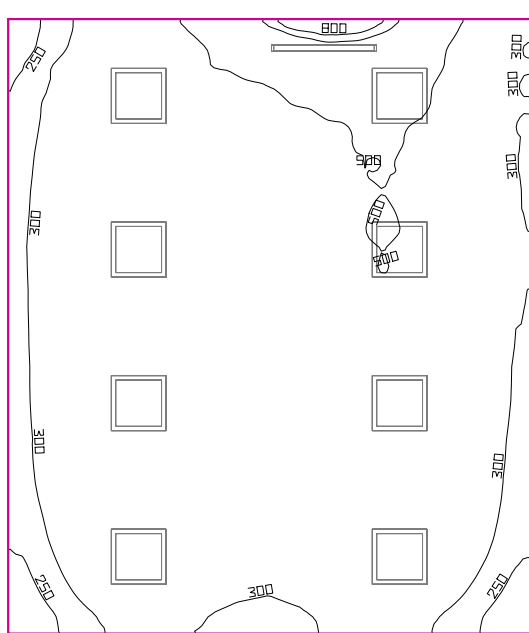
Surface	Result	Average (Target)	Min	Max	Min/average	Min/max
1 Workplane 19	Perpendicular illuminance (adaptive) [lx] Height: 0.000 m, Wall zone: 0.000 m	150 ( $\geq 500$ )	132	164	0.88	0.80

#	Luminaire	$\Phi$ (Luminaire) [lm]	Power [W]	Luminous efficacy [lm/W]
1	LUXIONA Troll - AM500LEDXXXPCI65 AMETYST 500 LED 3800LM PC E IP65 830	2675	32.0	83.6
Total via all luminaires		2675	32.0	83.6

Lighting power density:  $17.24 \text{ W/m}^2 = 11.48 \text{ W/m}^2/100 \text{ lx}$  (Floor area of room  $1.86 \text{ m}^2$ )

The energy consumption quantities refer to the lights planned for the room without taking into account light scenes and their dimming levels.  
Consumption: 88 kWh/a of maximum 100 kWh/a

## 78



Clearance height: 2.850 m, Reflection factors: Ceiling 70.0%, Walls 50.0%, Floor 20.0%, Maintenance factor: 0.80

## Workplane

Surface	Result	Average (Target)	Min	Max	Min/average	Min/max
1 Workplane 20	Perpendicular illuminance (adaptive) [lx] Height: 0.800 m, Wall zone: 0.000 m	409 (≥ 500)	203	899	0.50	0.23

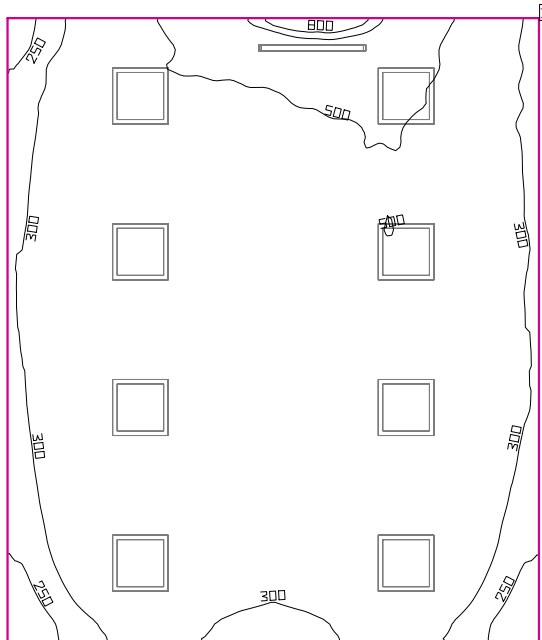
#	Luminaire	Φ(Luminaire) [lm]	Power [W]	Luminous efficacy [lm/W]
8	LUXIONA POLAND S.A. - RLOOKLEDXX_XXMPRMEI44 RUBIN LOOK LED 3900LM PLX E IP44 21 840 / 600X600	2906	33.0	88.1
1	LUXIONA Troll - ARUN_SLIM_LED_XXX_OPTICS-3 ARUNA SLIM N LED 4000LM OPTICS-3 E 34 840 L-1200	3772	32.0	117.9
Total via all luminaires		27020	296.0	91.3

Lighting power density:  $7.15 \text{ W/m}^2 = 1.75 \text{ W/m}^2/100 \text{ lx}$  (Floor area of room  $41.39 \text{ m}^2$ )

The energy consumption quantities refer to the lights planned for the room without taking into account light scenes and their dimming levels.  
Consumption: 810 kWh/a of maximum 1450 kWh/a



## 79



Clearance height: 2.850 m, Reflection factors: Ceiling 70.0%, Walls 50.0%, Floor 20.0%, Maintenance factor: 0.80

## Workplane

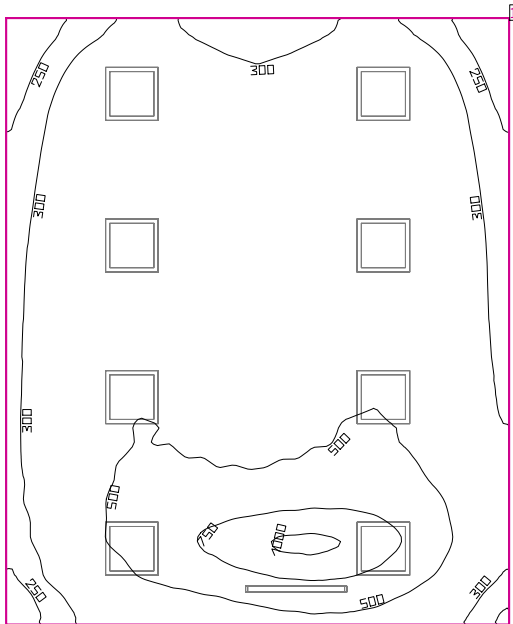
Surface	Result	Average (Target)	Min	Max	Min/average	Min/max
1 Workplane 21	Perpendicular illuminance (adaptive) [lx] Height: 0.800 m, Wall zone: 0.000 m	410 ( $\geq 500$ )	203	888	0.50	0.23

#	Luminaire	$\Phi$ (Luminaire) [lm]	Power [W]	Luminous efficacy [lm/W]
8	LUXIONA POLAND S.A. - RLOOKLEDXX_XXMPRMEI44 RUBIN LOOK LED 3900LM PLX E IP44 21 840 / 600X600	2906	33.0	88.1
1	LUXIONA Troil - ARUN_SLIM_LED_XXX_OPTICS-3 ARUNA SLIM N LED 4000LM OPTICS-3 E 34 840 L-1200	3772	32.0	117.9
Total via all luminaires		27020	296.0	91.3

Lighting power density:  $7.18 \text{ W/m}^2 = 1.75 \text{ W/m}^2/100 \text{ lx}$  (Floor area of room  $41.21 \text{ m}^2$ )

The energy consumption quantities refer to the lights planned for the room without taking into account light scenes and their dimming levels.  
Consumption: 810 kWh/a of maximum 1450 kWh/a

## 80



Clearance height: 2.850 m, Reflection factors: Ceiling 70.0%, Walls 50.0%, Floor 20.0%, Maintenance factor: 0.80

## Workplane

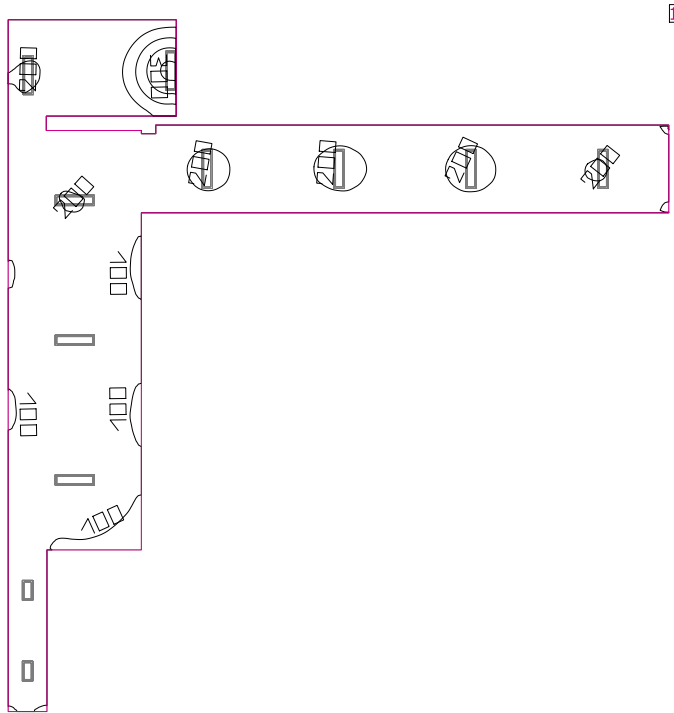
Surface	Result	Average (Target)	Min	Max	Min/average	Min/max
1 Workplane 22	Perpendicular illuminance (adaptive) [lx] Height: 0.800 m, Wall zone: 0.000 m	426 (≥ 500)	196	1045	0.46	0.19

#	Luminaire	Φ(Luminaire) [lm]	Power [W]	Luminous efficacy [lm/W]
8	LUXIONA POLAND S.A. - RLOOKLEDXX_XXMPRMEI44 RUBIN LOOK LED 3900LM PLX E IP44 21 840 / 600X600	2906	33.0	88.1
1	LUXIONA Troll - ARUN_SLIM_LED_XXX_OPTICS-3 ARUNA SLIM N LED 4000LM OPTICS-3 E 34 840 L-1200	3772	32.0	117.9
Total via all luminaires		27020	296.0	91.3

Lighting power density:  $6.98 \text{ W/m}^2 = 1.64 \text{ W/m}^2/100 \text{ lx}$  (Floor area of room  $42.40 \text{ m}^2$ )

The energy consumption quantities refer to the lights planned for the room without taking into account light scenes and their dimming levels.  
Consumption: 810 kWh/a of maximum 1500 kWh/a

## 81



Clearance height: 3.000 m, Reflection factors: Ceiling 70.0%, Walls 50.0%, Floor 20.0%, Maintenance factor: 0.80

## Workplane

Surface	Result	Average (Target)	Min	Max	Min/average	Min/max
1 Workplane 23	Perpendicular illuminance (adaptive) [lx] Height: 0.000 m, Wall zone: 0.000 m	157 (≥ 500)	66.7	362	0.42	0.18

#	Luminaire	Φ(Luminaire) [lm]	Power [W]	Luminous efficacy [lm/W]
2	LUXIONA POLAND S.A. - RLOOKLEDXX_XXMPRMEI44 RUBIN LOOK LED 2600LM PLX E IP44 21 840 / 600X300	1937	22.0	88.1
9	LUXIONA POLAND S.A. - RLOOKLEDXX_XXMPRMEI44 RUBIN LOOK LED 5200LM PLX E IP44 21 840 / 1200X300	3875	43.0	90.1
Total via all luminaires		38749	431.0	89.9

Lighting power density:  $3.53 \text{ W/m}^2 = 2.24 \text{ W/m}^2/100 \text{ lx}$  (Floor area of room 121.97 m<sup>2</sup>)

The energy consumption quantities refer to the lights planned for the room without taking into account light scenes and their dimming levels.  
Consumption: 1200 kWh/a of maximum 4300 kWh/a